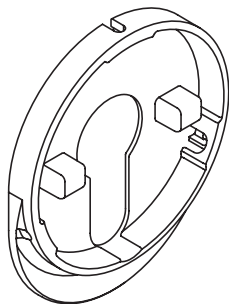


tedee GO2

EUROPEAN ADAPTER



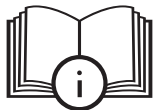
x1



x1



x1



support@tedee.com



www.tedee.com/support



(+48) 22 307 72 67
8.00 - 16.00 (CET)



Tedee Sp. z o. o.
Karola Bohdanowicza 21/57
02-127 Warszawa
Poland

The Bluetooth® word mark and logos are registered trademarks owned by Bluetooth SIG, Inc. and any use of such marks by Tedee Sp. z o.o. is under license. Other trademarks and trade names are those of their respective owners.

Google, Android and Google Play are trademarks of Google LLC.

Apple and App Store are trademarks of Apple Inc. IOS is a trademark or registered trademark of Cisco in the U.S. and other countries and is used under license.



FR

Cet appareil,
ses piles
et cordons
se recyclent

À DÉPOSER
EN MAGASIN

À DÉPOSER
EN DÉCHÈTERIE



Points de collecte sur www.quefairedemesdechets.fr



Rev5



TEST BEFORE INSTALLATION



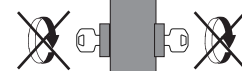
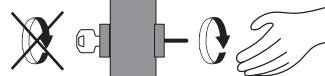
1



2x

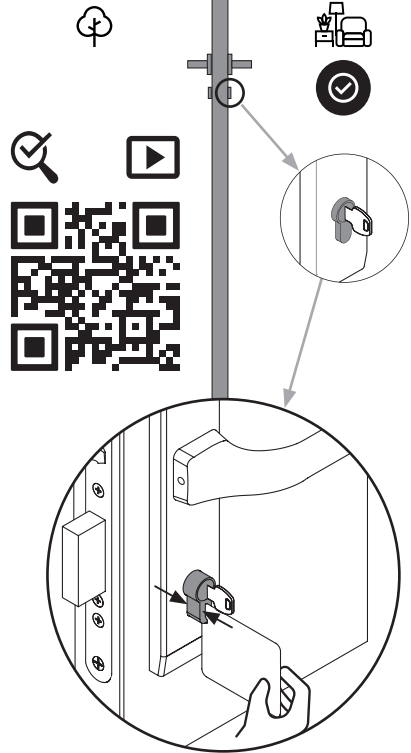


2

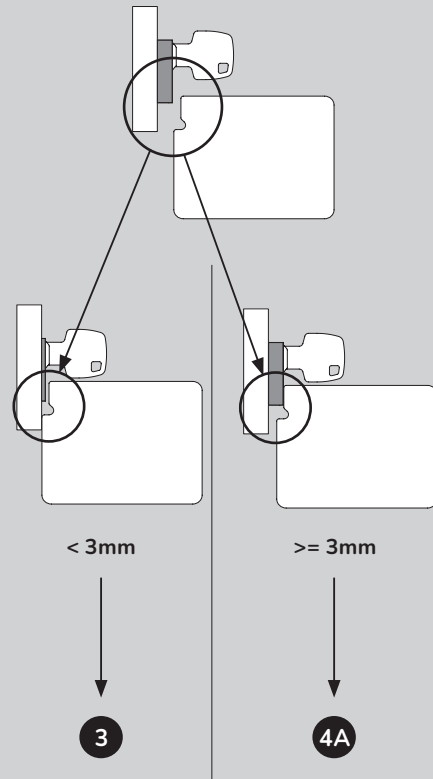


support@tedee.com

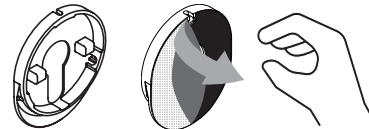
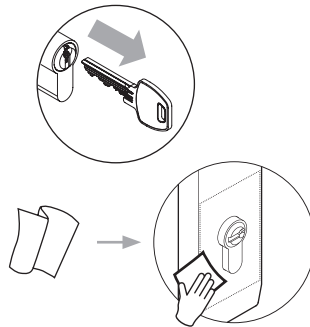
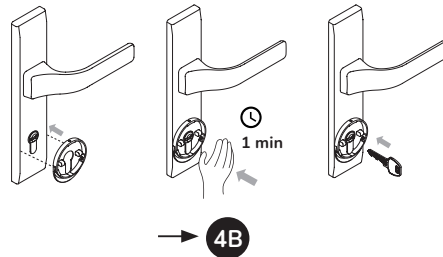
2



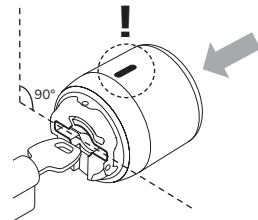
?



3


 $> 15^{\circ}\text{C}$


4A



4B

